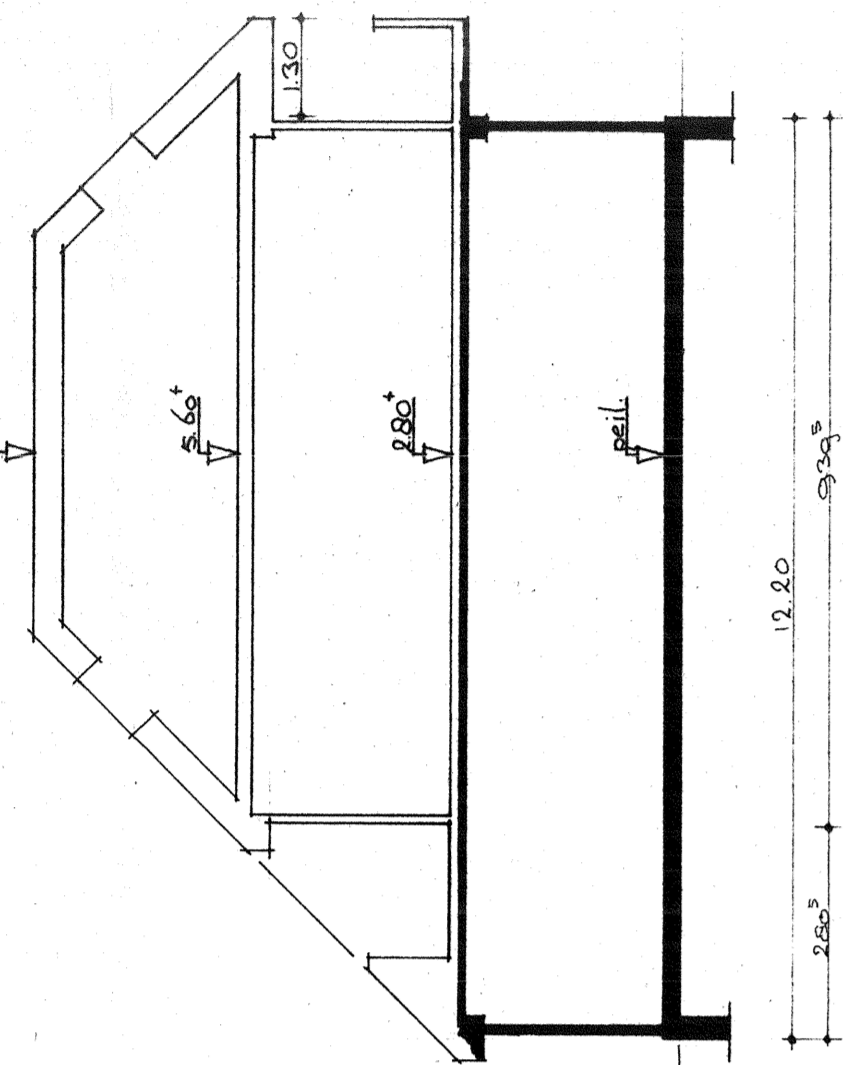
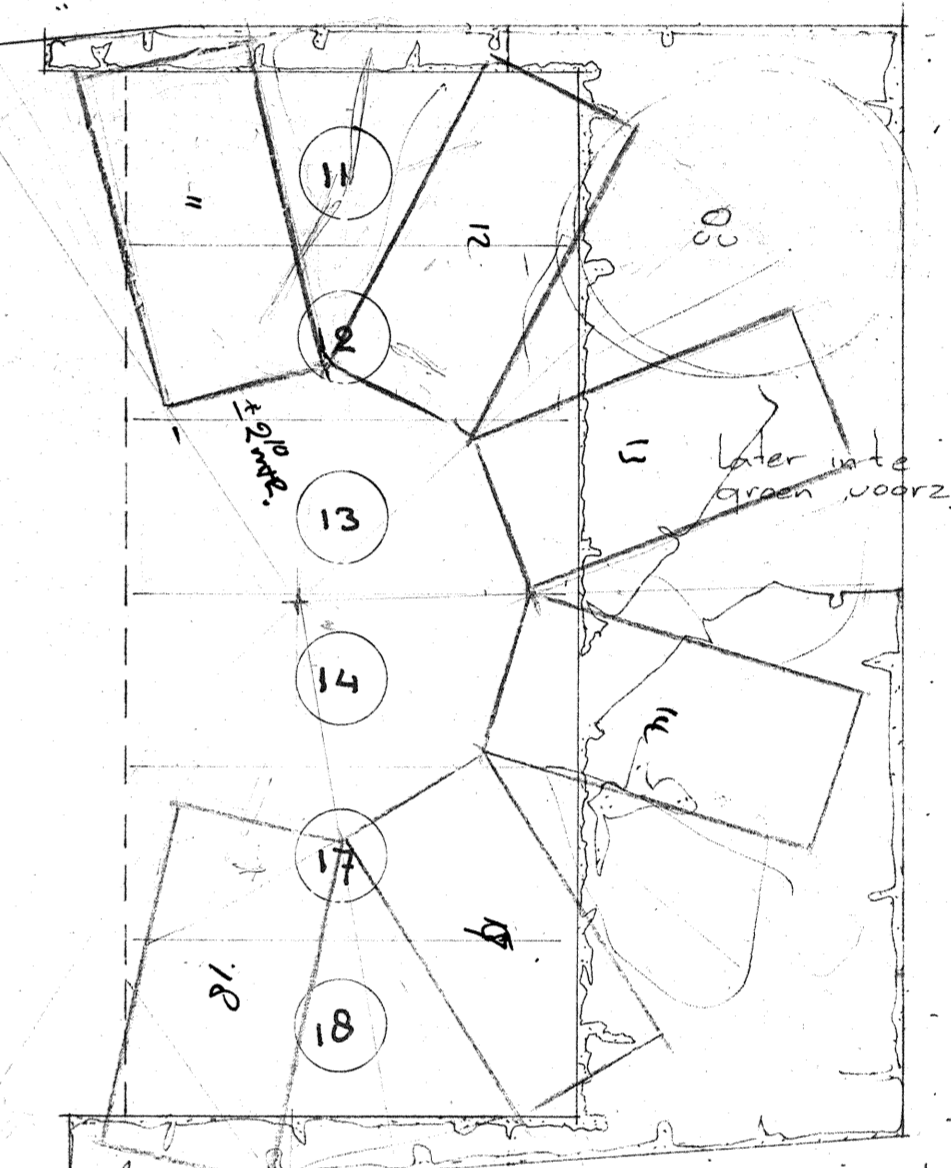
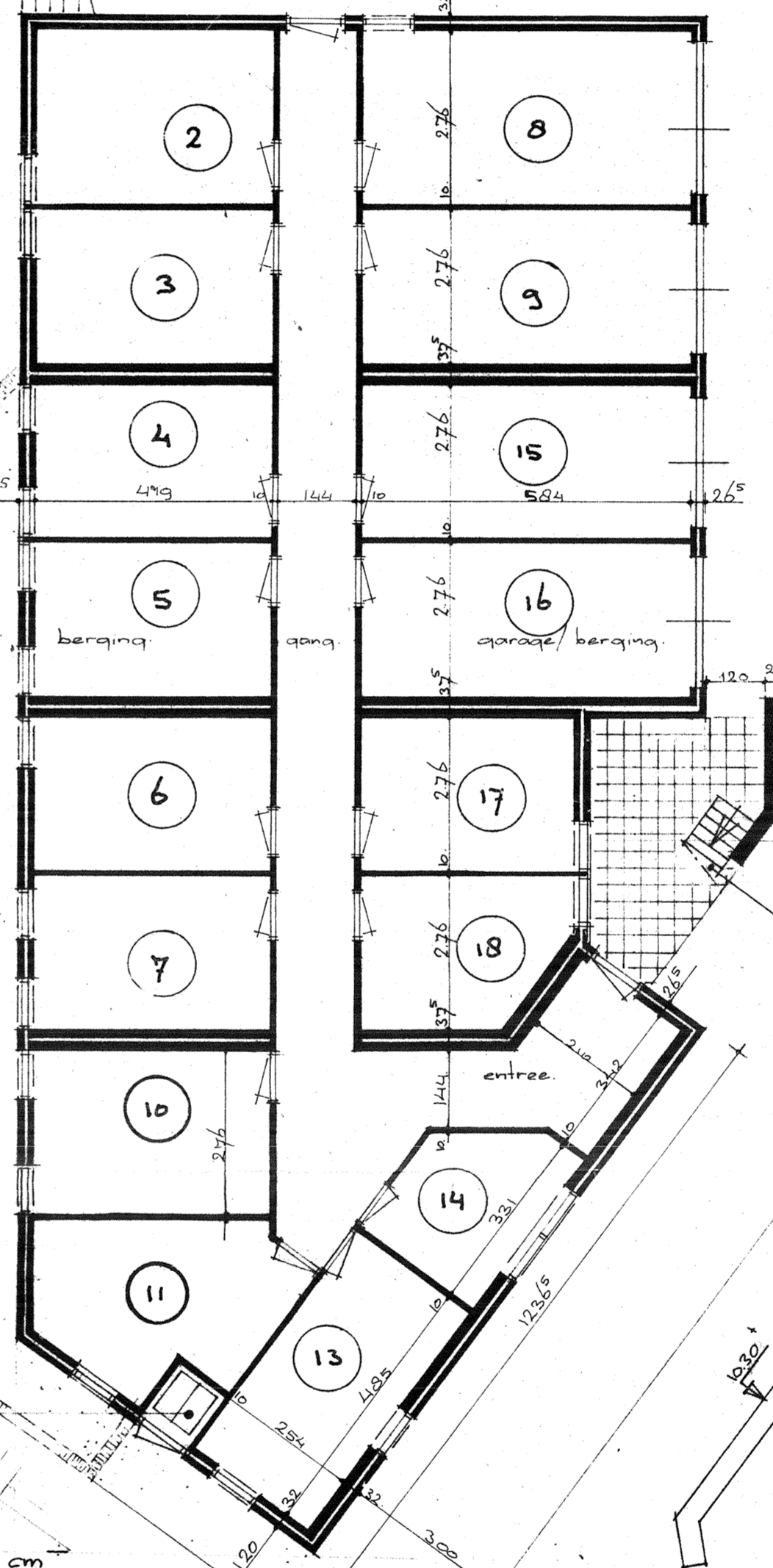
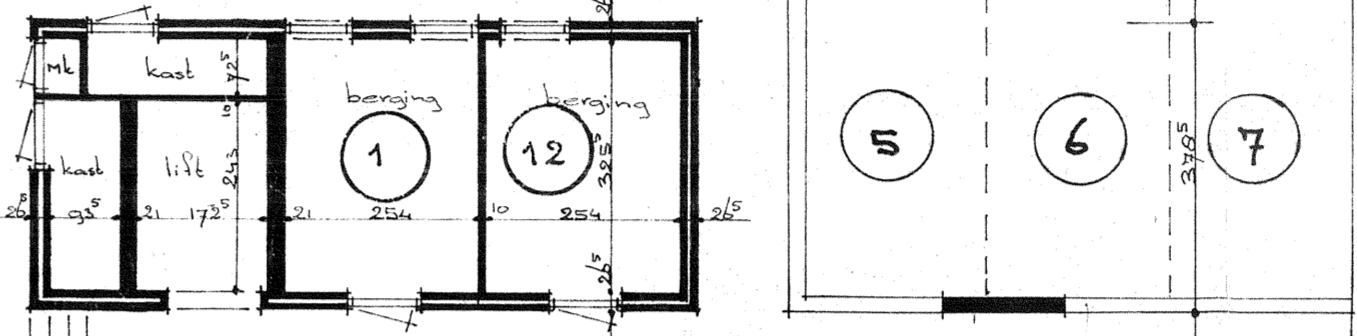
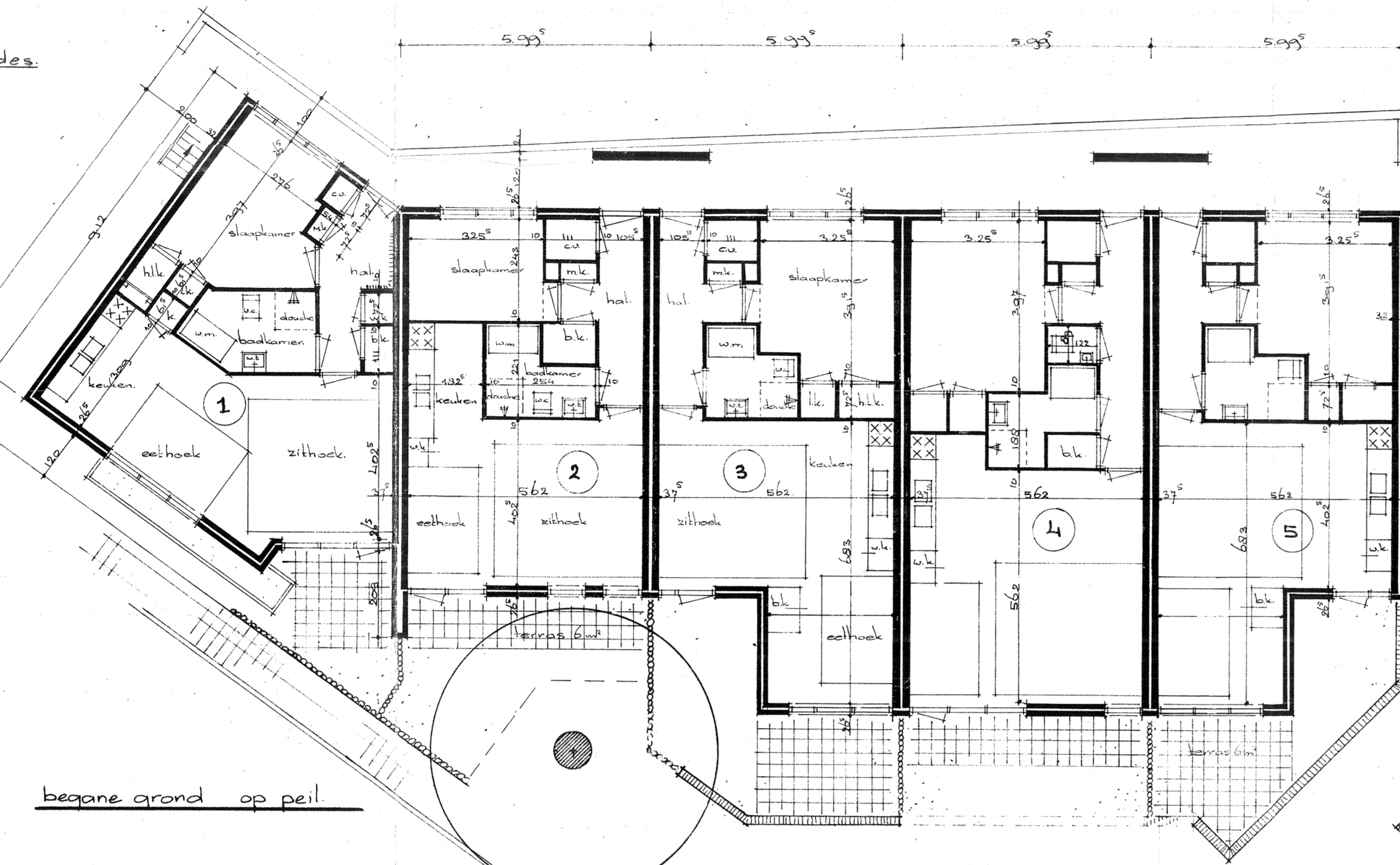


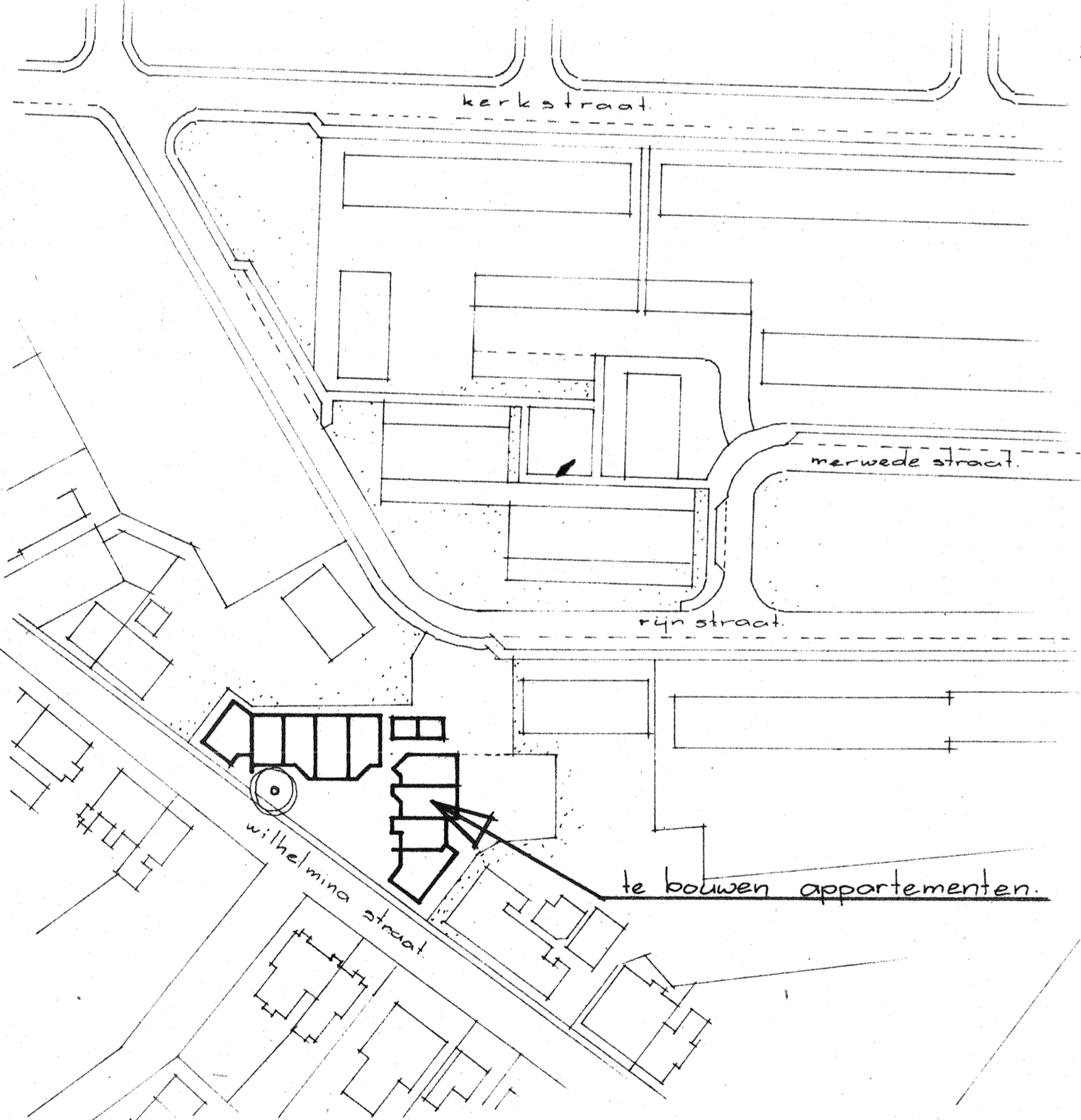
schema doorsnedes



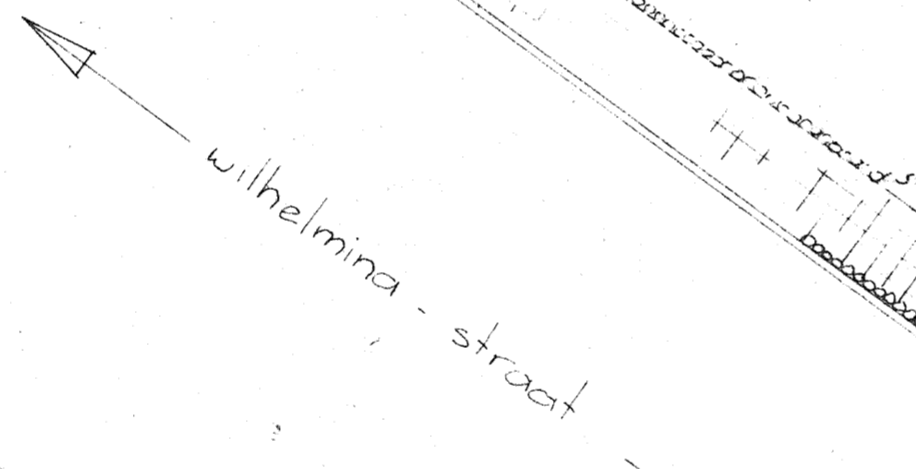
begane grond op peil



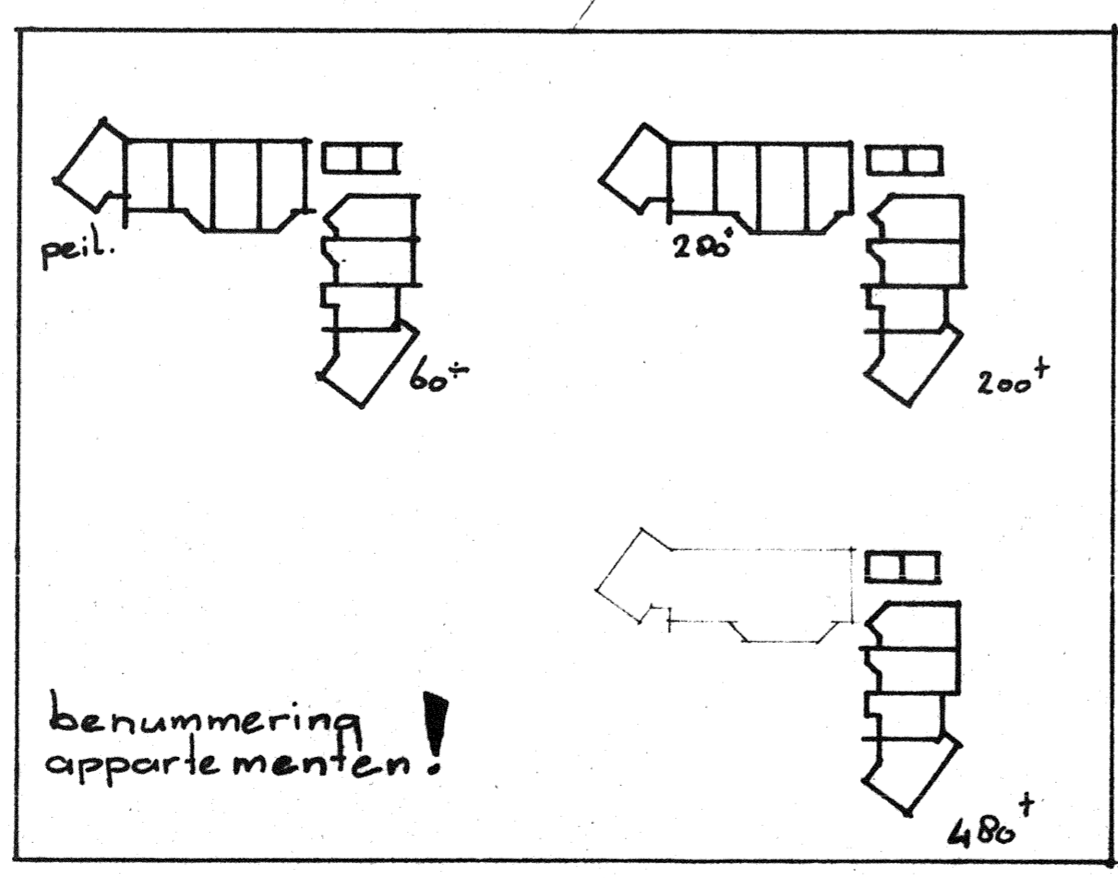
later uit te richten  
groen voorziening



te bouwen appartementen

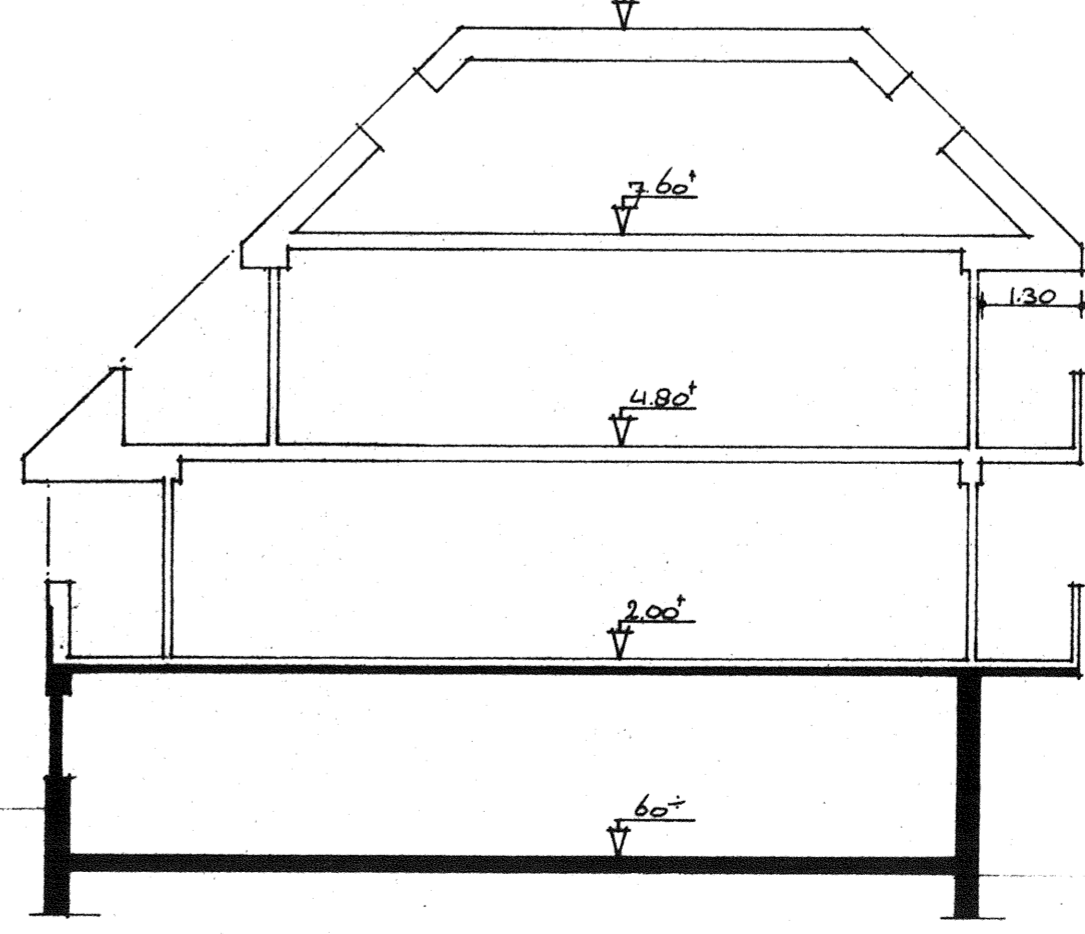


souterrain op 60 cm



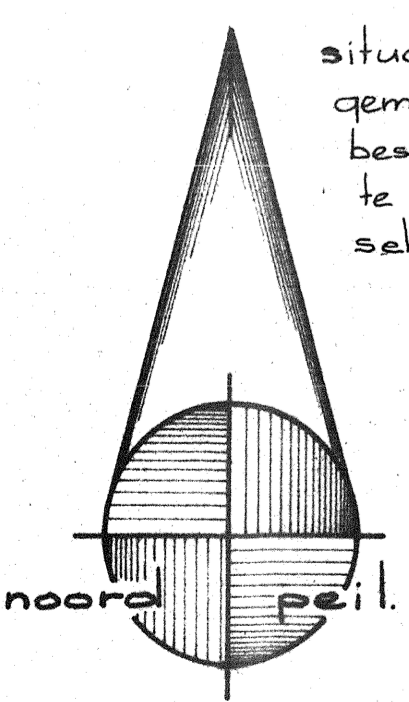
benummering appartementen!

schema doorsnedes



ruimte scheppen

plan voor het bouwen van 18 appartementen aan de wilhelminastraat te nijverdal  
opdrachtgever: bouwbedr. stegeman bv. hultse tel. 05486-51.261



situatie schaal 1:1000  
gemeente hellendoorn  
bestemmingsplan "de brakenbelt"  
te nijverdal  
sectie I, nr. 4508

nijhoff  
architecten

architectenburo johan nijhoff bv  
medewerkend architect  
ir. gerhard nijhoff b.i.  
grote maatweg 37a  
7542 VL. wierden  
telefoon 05496-3060  
nijverdal, 05486-16487

plan: 1537  
oet: hagerink  
dd: 28-1-81  
oes: 28-1-81 07-01  
sch: 1-1-81

